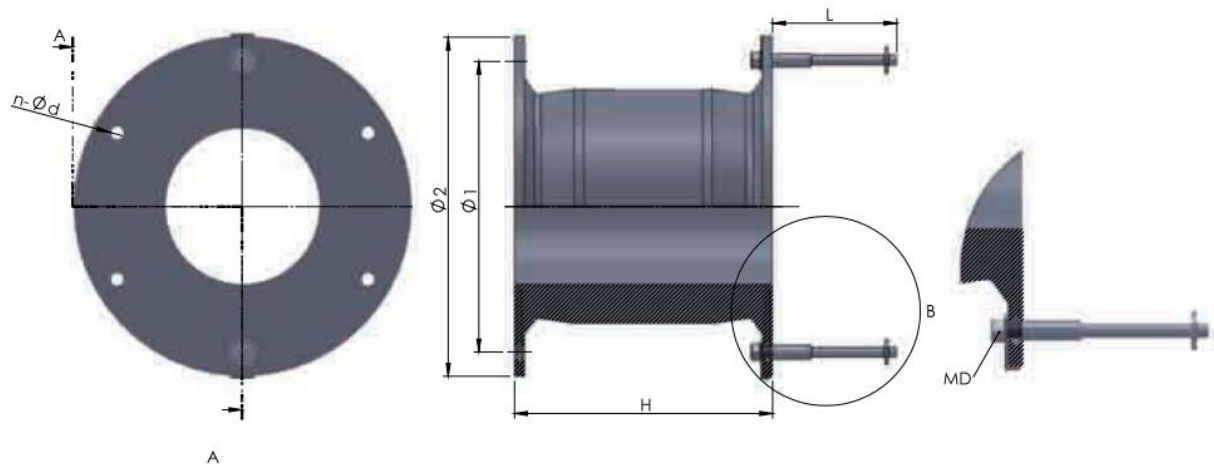


## Cell fender

### Cell rubber fender Description:

Cell fenders consist of hollow cylindrical rubber body and UHMV-PE frontal frames. The panel structure works well to reduce the shear force and hull pressure while the ship berthing. With the advantages of high energy absorption and low reaction force, cell fenders are ideal for large vessels ship to dock berthing operation.

### Cell rubber fender specification&dimension:



Serial No.	H(mm)	$\Phi 1$ (mm)	$\Phi 2$ (mm)	n(pc)	$\Phi d$	MD Bolts/anchors (Qty x Size)	Weight(kgs)
WF-H500	500	550	650	4	32	4 x M24	111
WF-H630	630	700	840	4	39	4 x M30	230
WF-H800	800	900	1050	6	40	6 x M32	412
WF-H1000	1000	1100	1300	6	47	6 x M39	825
WF-H1150	1150	1300	1500	6	50	6 x M42	1210
WF-H1250	1250	1450	1650	6	53	6 x M45	1500
WF-H1450	1450	1650	1850	6	61	6 x M52	2310
WF-H1600	1600	1800	2000	8	61	8 x M52	3030
WF-H1700	1700	1900	2100	8	66	8 x M56	3700
WF-H2000	2000	2000	2200	8	74	8 x M64	5260
WF-H2250	2250	2300	2550	10	74	10 x M64	7500
WF-H2500	2500	2700	2950	10	74	10 x M64	10750
WF-H3000	3000	3150	3350	12	90	12 x M76	18500